

Keylezz® Latch Lock for metal cabinets
External antenna and metal door accessories



- Easy mounting without additional drilling
- Good readability by using external antenna
- Suitable for employee lockers, lockers, stainless steel doors, etc.

How to use the Keylezz® Latch Lock for metal cabinets of all types!

The sheet metal door accessories make it possible

- Your existing employee ID card is the key
- One medium for all accesses
- Issue and revoke authorizations in seconds
- Expand your locking system as required
- Automatic locking of the locks
- Full control of who has operated the locks and when multiple use of furniture e.g. lockers in shift operation
- Furniture lock management via card, software or via smartphone app

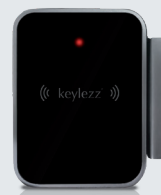


Keylezz® Latch Lock

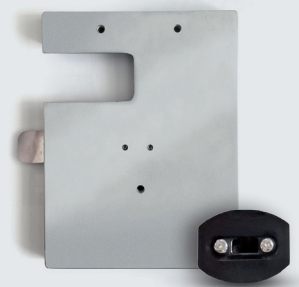


Keylezz® Latch Lock with accessories

The components for metal cabinets



Keylezz® external antenna with LED light and power supply connector



Metal door accessories for metal cabinets

Item no. 5804106



Includes

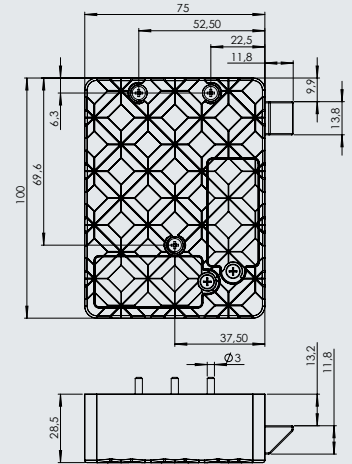
- Keylezz® Latch Lock Multiflex
- internal antenna Pos.A
- locking part with predetermined breaking point
- automatic ejector
- batteries 123A 3V
- screws

Technology variants

- Mifare Classic
 - Mifare FreeLocker
 - Master/Slave
 - Multi/reader
- Legic Prime/Advant, Mifare Desfire, HID iclass

Technical data

Weight	Weight per assortment	Total set: 200 g
Electrical data	Device class RL 1999/5/EG	Class 2
	Equipment class according to RL 1999/5/EC	max. 66 dBµA/m in 10 m
	Technologies	MIFARE Classic and DESFire; LEGIC Prime, Advant and CTC; ISO 15693, ISO14443A
	Batterie typ	2x CR 123A 3V
Environmental conditions	Operating temperature	-5°C to +50°C
	Relative humidity operation	20% to 75% (non condensing)
Dimensions in mm (LxWxD)	100x86,5x28,5 (With open trap)	100x75x28,5 (With closed trap)



Overview

