



Keylezz® Lock Manager OSS Configuration



Operating instructions

Content

1. Preparation	Page 3
> 1.1. Installation	Page 3
> 1.2. Registration	Page 3
2. Basic configuration.....	Page 3
> 2.1. General	Page 3
> 2.2. Mifare DESFire	Page 5
> 2.3. LEGIC	Page 6
3. Lock configuration.....	Page 7
> 3.1. via NMT	Page 7
• 3.1.1. Creating OSS groups	Page 7
• 3.1.2. Reading in new locks	Page 8
• 3.1.3. Importing locks into <i>Keylezz® Lock Manager</i>	Page 9
• 3.1.4. Configuring locks	Page 11
• 3.1.5. Transferring configuration to lock	Page 10
> 3.2. via App Keylezz® LockConfigurator	Page 11
• 3.2.1. Creating OSS groups	Page 11
• 3.2.2. Reading in new locks via app	Page 11
• 3.2.3. Exporting scanned locks to cloud	Page 12
• 3.2.4. Importing locks into <i>Keylezz® Lock Manager</i>	Page 13
• 3.1.5. Configuring locks	Page 14
• 3.1.6. Exporting configured lock data to cloud	Page 15
• 3.1.7. Importing configured lock data into the app	Page 16
• 3.1.8. Transferring configuration to lock	Page 17

1. Preparation

1.1. Installation

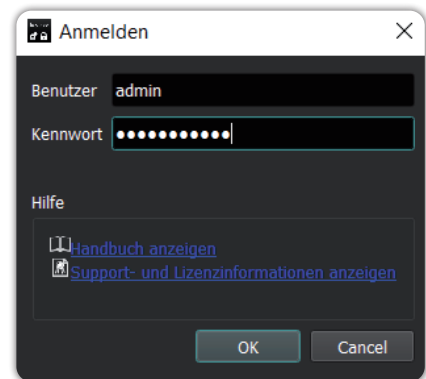
Install the *Keylezz® Lock Manager*

(see document: *Keylezz_Bedienungsanleitung_LockManager.pdf*, point 1 described).

2.1. Registration

The following user is created during installation:

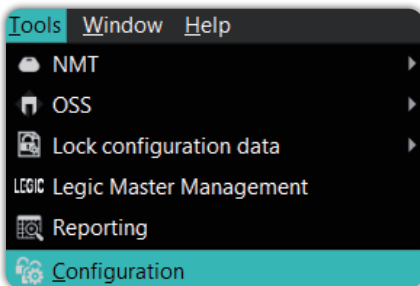
Benutzer (user)	admin
Kennwort (password)	lockmanager



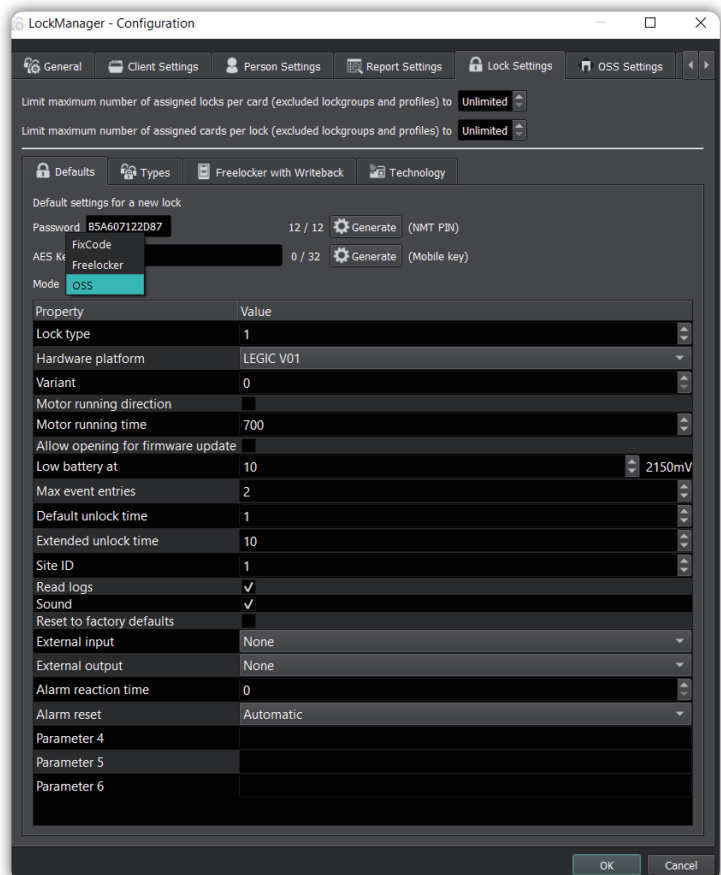
2. Basic configuration

2.1. General

- Open the settings dialogue via Extras -> Configuration



- Switch to the „Lock settings“ tab and select „OSS“ as the mode
- The password should be identical for all locks of an installation
- You can now specify the default values for new locks here



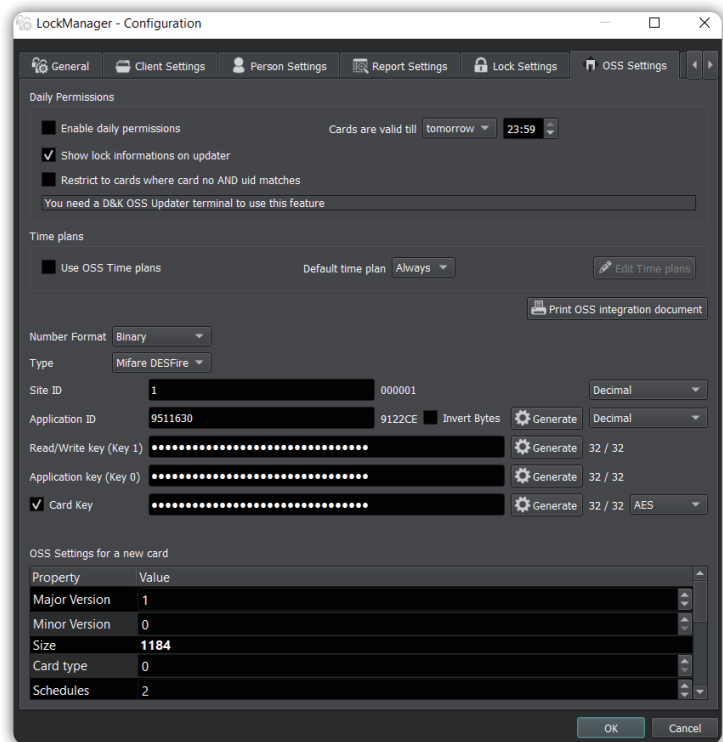
2. Basic configuration

Value	Description	Comment
Lock type	Type of lock	Always 1
Hardware platform	Type of lock main board	Always LEGIC V01
Variant	Firmware mode of the lock	With OSS always 0
Change of locking direction	Controls whether the bolt is retracted or extended when opening	Is necessary in certain installation situations
Motor activation time	Controls the duration of the bolt movement	Minimum 700
Allow opening for firmware update	If this option is set, the lock is opened during a firmware update.	If something goes wrong during a firmware update, the lock does not have to be broken open.
Low Bat at	Indicates the voltage value at which the lock enters the „low battery“ state.	Should not fall below 2150mV
Max Event Entries	Maximum number of event entries that the lock can write.	Should not be greater than the maximum possible event entries on the card.
Standard opening time	Opening time in seconds	
Extended opening time	Extended opening time in seconds	Should usually be greater than the standard opening time
Read out logs	Indicates that logs can be read out via the NMT.	Recommended: on
Beep	Indicates that the lock can emit sound	Recommended: on
Reset to factory settings	Indicates that the lock is reset after transmission	Always off
External input	Action when a signal is present on the input	Requires connection to input
External output	When a signal is applied to the output	Requires connection to output
Alarm response time	Alarm response time in seconds	
Alarm reset	By which action an alarm is reset	
Parameter 4	Special parameters	Defined by Keylezz®
Parameter 5	Special parameters	Defined by Keylezz®
Parameter 6	Special parameters	Defined by Keylezz®

2. Basic configuration

2.2. Mifare DES Fire

- Open the settings dialogue via Extras → Configuration
- Switch to the „OSS Settings“ tab and select „Mifare DESFire“ as type
- Enter the necessary data of your OSS configuration

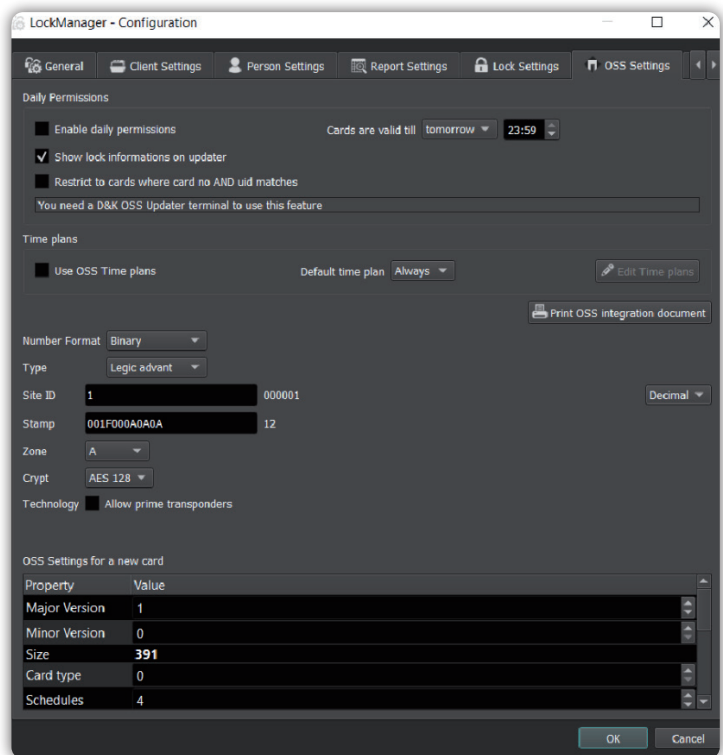


Value	Description
Site Code	Site/application identifier
Application ID	DESFire Application ID (AID) of the OSS application
Read/Write Key	AES key for reading and writing the OSS application

2. Basic configuration

2.3. LEGIC

- Open the settings dialogue via Extras → Configuration
- Switch to the tab „OSS settings“ and select „LEGIC advant“ as the type
- Enter the necessary data of your OSS configuration





Value	Description
Site Code	Site/plant identifier
Stamp	Legic Stamp of the OSS Segment
Zone	LEGIC Zone of the OSS Segment
Encryption	Type of encryption of the OSS segment

Depending on the licence version, even more settings may be available, but these are not relevant for integrating locks into an existing OSS infrastructure.

3. Locks configuration

There are two ways to configure locks:

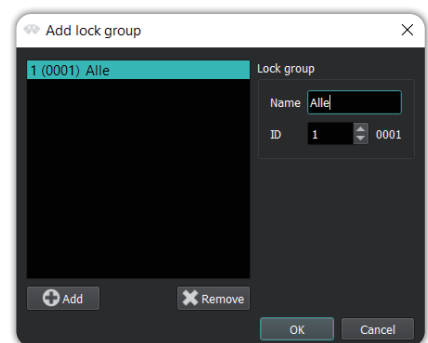
	via NMT (NFC Mobile Tool)
	via App Keylezz® Lock Configurator

3.1. Configuration via NMT (NFC Mobile Tool)



3.1.1. Creating OSS groups

- Click on the button „Lock groups“ in the main screen
- Create a new group by clicking on „Add“
- Each group must have a name and a unique ID that corresponds to the groups from your OSS configuration
- Click on OK to apply the groups



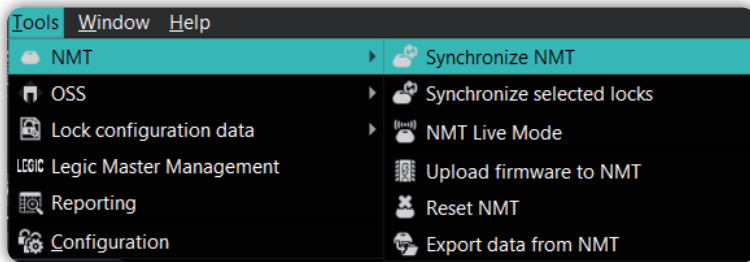
3.1.2. Reading in new locks

- Switch on the NMT by pressing the button
- Wait until the LEDs have gone out again
- Read in as many locks as you like. To do this, hold the NMT against the lock or the antenna of the lock. The melody for unknown lock should be heard for each lock and LEDs should light up green
- To make sure that there is no old data on the NMT, you can reset the NMT before reading it in

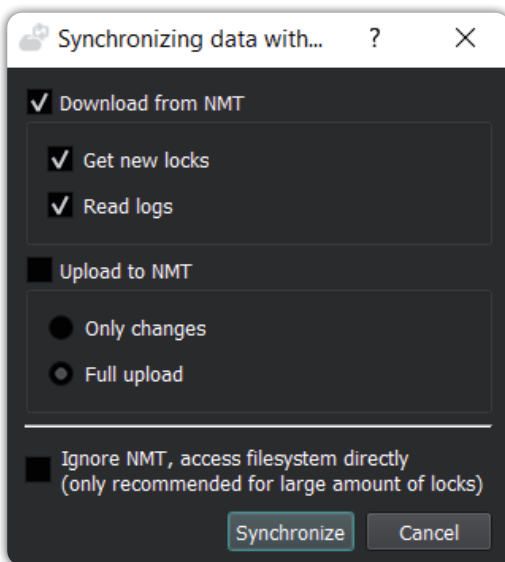
3. Configuring locks - via NMT

3.1.3. Importing locks into Keylezz® Lock Manager

- Then connect the NMT to the PC via the USB cable
- Switch on the NMT if the LEDs do not light up after plugging it in
- In the software, select „Synchronise with NMT“ from the menu bar

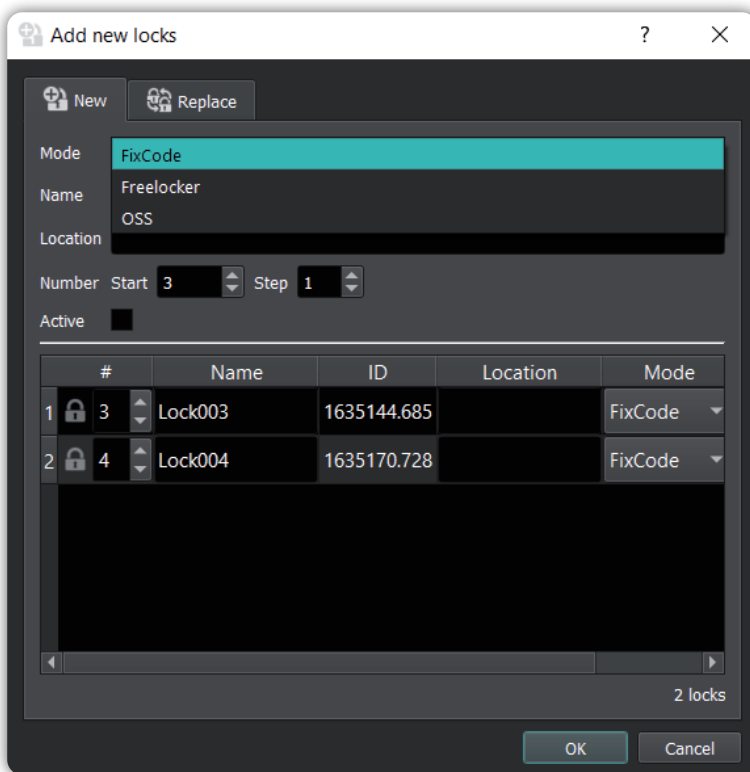


- Make sure that the option for „Download data from NMT“ and „Read in new locks“ are set
- Then click on „Synchronise“



3.1.4. Configuring locks in Keylezz® Lock Manager

- After the synchronisation process, the new locks are listed in the order in which they were collected
- You can now determine for all locks how they should be created



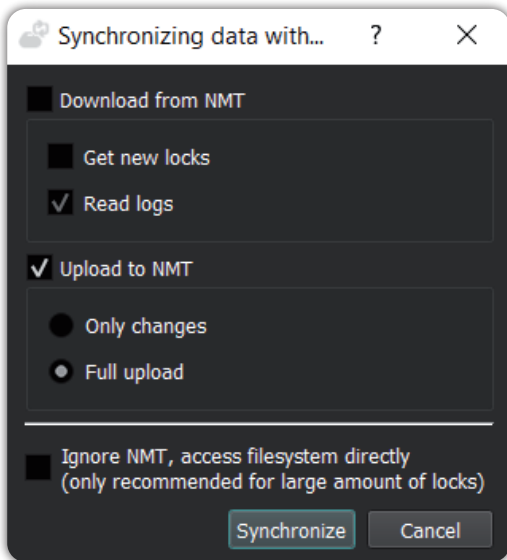
Value	Description
Mode	OSS
Name	You can specify a prefix which field to append and the number of padding characters you can specify in the last field
Location	Specify the location where the locks have been installed.
Number	This is the OSS Door-ID, you can have it numbered automatically by specifying the start value and the step size.
Groups	If you have created groups, you can select the groups to which the locks are to be assigned.
Aktive	Only active locks are taken into account during synchronisation.

- In the overview you can also edit an individual lock manually
- Then click on OK
- To edit a lock, simply double-click on it in the overview or open the corresponding dialogue by clicking on the button „Edit lock parameters“
- The explanation of the parameters can be found under 2.1

3. Configuring locks - via NMT

3.1.5. Transferring the configuration to the lock

- Make sure that the NMT is switched on and connected to the computer via USB
- Select „Synchronise with NMT“ from the menu bar in the software
- Make sure that „Upload data to NMT“ is activated
- Click on Synchronise



You can now configure the locks in any order:

- Activate the NMT briefly after disconnecting it from the USB and wait until the LEDs have gone out before going to the first lock
- While the configuration is being transmitted, both LEDs should flash green quickly, then both LEDs should flash orange and a corresponding beep will sound if successful
- Afterwards, an authorised card with the correct OSS configuration should be directly usable

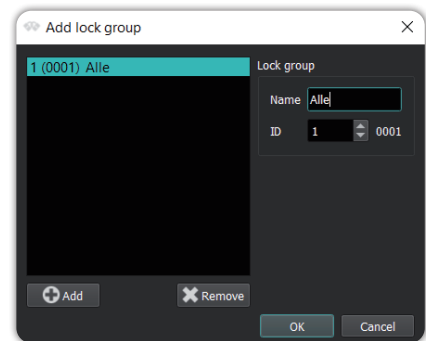
3.2. Configuration via app Keylezz® Lock Configurator



Detailed instructions for the *Keylezz® LockConfigurator* app can be found at www.keylezz.com/downloads

3.1.1. Creating OSS groups

- Click on the „Lock Groups“ button in the main screen
- Create a new group by clicking on „Add“
- Each group must have a name and a unique ID that corresponds to the groups from your OSS configuration
- Click on OK to apply the groups

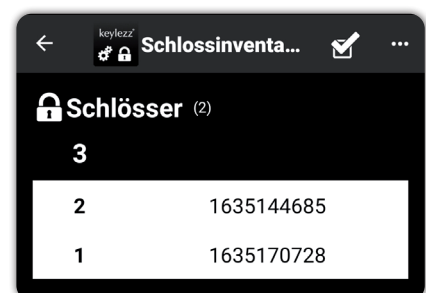
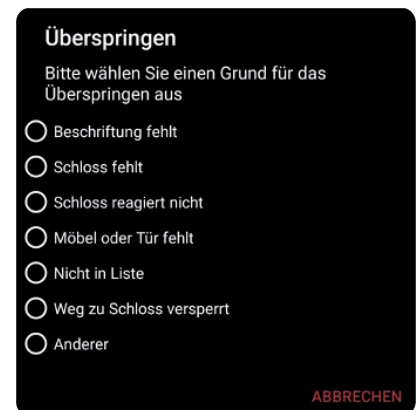


3.1.2. Reading in new locks via app

New locks can be conveniently read in via smartphone using the *Keylezz® Lock Configurator* app

- Click on „Lock inventory“ in the main menu of the *Keylezz® Lock Configurator* app
- Hold the smartphone to the lock and read in the lock ID via the app. Then assign a number to the lock
- In addition, there is the option to enter a starting value from which to begin reading in the locks
- The „Skip“ function - Thanks to this function, you can quickly see which locks have been overlooked and you can keep the order without having to read in all the locks again

Note: For a detailed description of these functions, please refer to the „*Keylezz® Lock Configurator*“ manual.

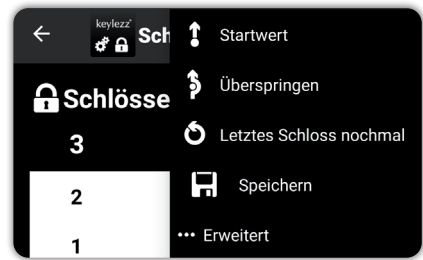


3. Configuring locks - via app

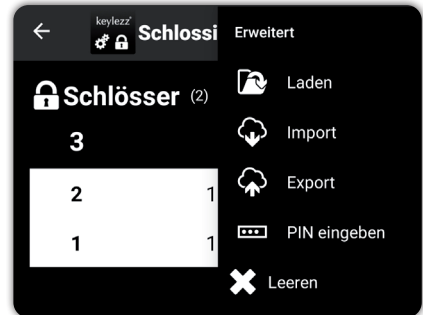
3.1.3. Export scanned locks to cloud

In order for the scanned locks to be imported into *Keylezz® Lock Manager*, they must be stored in the Cloud:

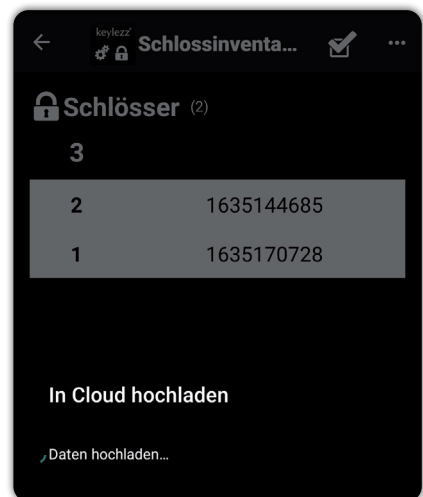
- In the *Menü*  now select „Advanced“...



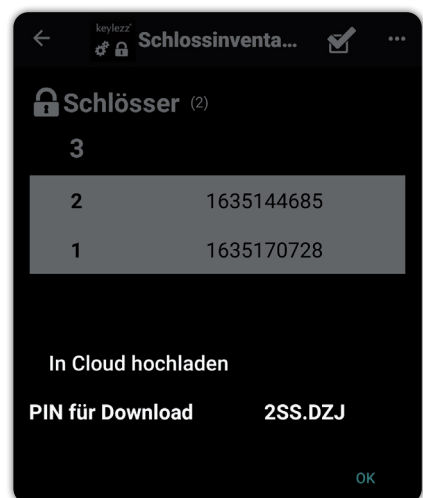
- ... and then „Export“



- The locks are now loaded and stored in the cloud



- After successful export you will receive a PIN. You will need this for the following import of the locks into the *Keylezz® Lock Manager*

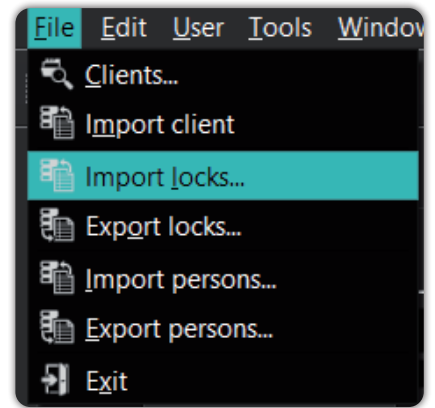


3. Configuring locks - via app

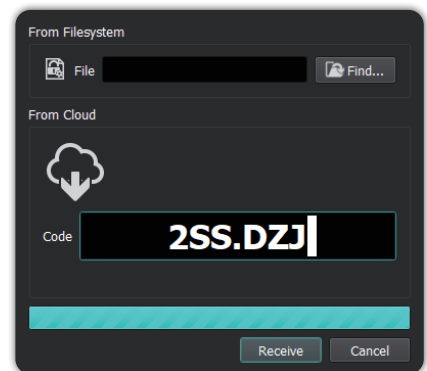
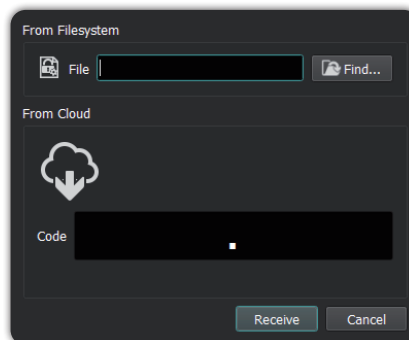
3.1.4. Import locks into Keylezz® Lock Manager

Import the locks read in via the app:

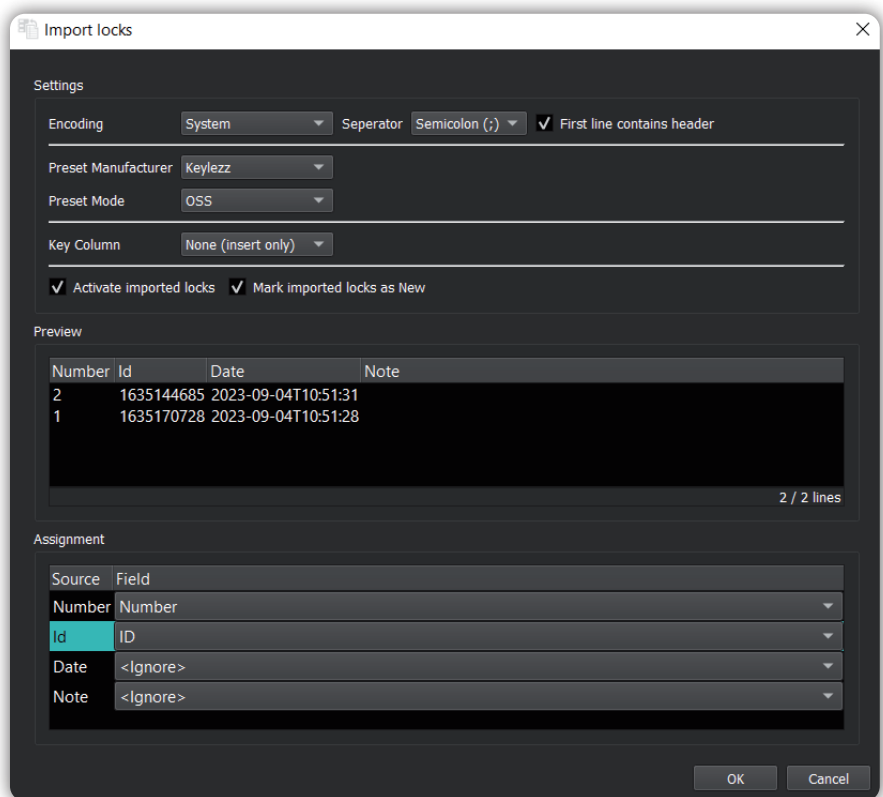
- Select „File“ and then „Import locks...“



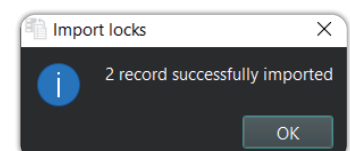
- Now enter the PIN received in step 3.1.3



- You will now see the locks available for import listed



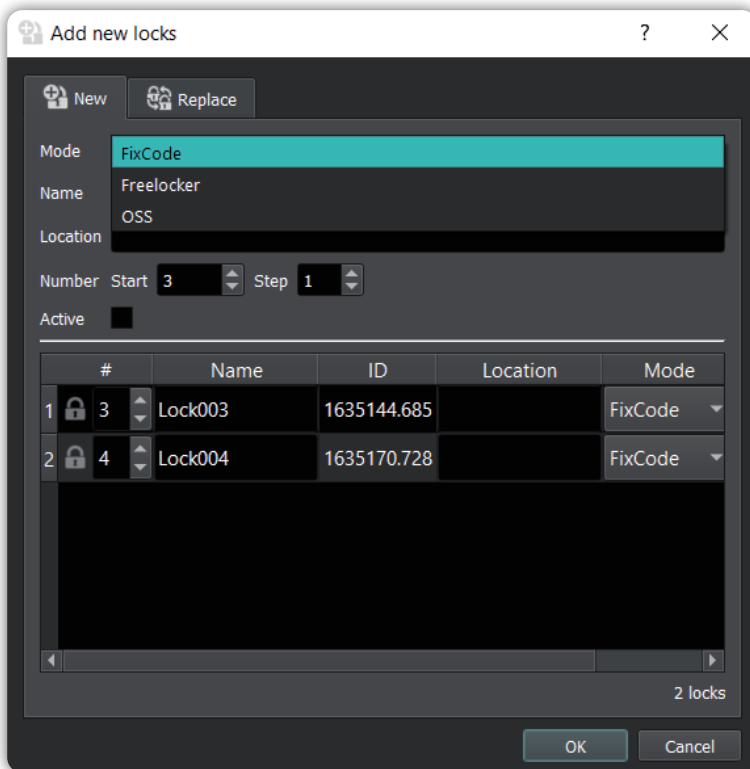
- Click on the „OK“ button to complete the import



3. Configuring locks - via app

3.1.5. Configure locks - in Keylezz® Lock Manager

In the *Keylezz® Lock Manager* you now have the possibility to configure the locks. All locks are listed in the window.



Value	Description
Mode	OSS
Name	You can specify a prefix, which field to append and the number of fill characters you can specify in the last field.
Location	Specify the location where the locks were installed
Number	This is the OSS Door-ID, you can have it numbered automatically by specifying the start value and the step size
Groups	If you have created groups, you can select the groups to which the locks are to be assigned.
Aktive	Only active locks are taken into account during synchronisation.

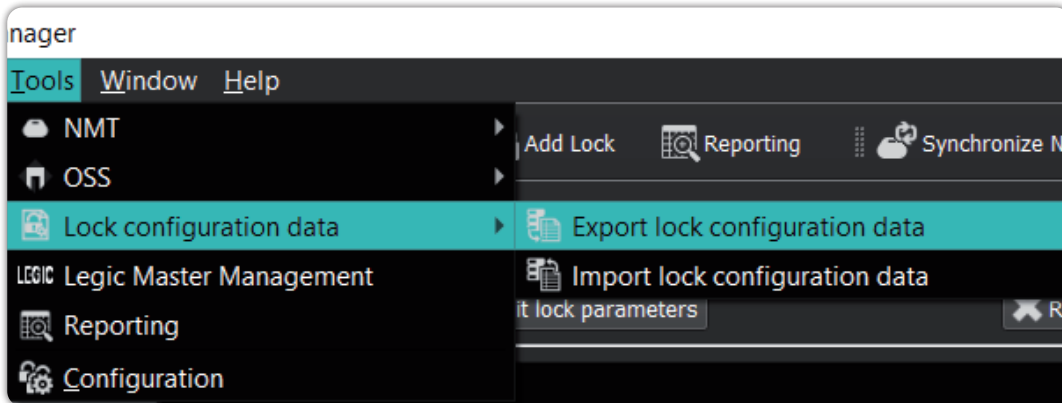
- In the overview you can also edit an individual lock manually
- Then click on OK
- To edit a lock, simply double-click on it in the overview or open the corresponding dialogue by clicking on the button „Edit lock parameters“
- The explanation of the parameters can be found under 2.1.

3. Configuring locks - via app

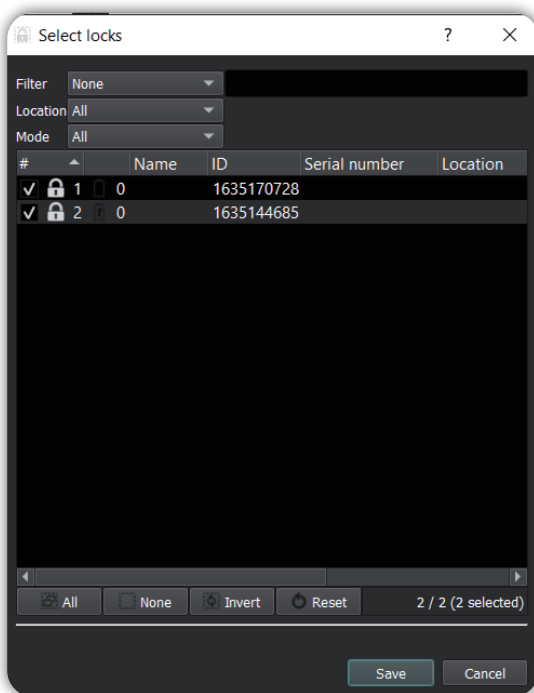
3.1.6.1. Export configured lock data to cloud

Nachdem Sie die Schlösser im *Keylezz® Lock Manager* konfiguriert haben müssen diese für den Import in die App in der Cloud gespeichert/exportiert werden:

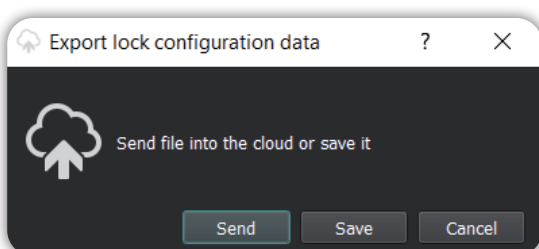
- Select „Tools“ -> „Lock configuration data“ and then „Export lock configuration data“



- Now select all the configured locks you want to export. Then press „Save“



- Then press „Send“ to export the data. After the export, you will receive a PIN that you need for the import into the app. If you want to save this export, please click on the „Save“ button



3. Configuring locks - via app

3.1.7. Importing configured lock data into the app

Now import the data of the configured locks previously exported to the Cloud:

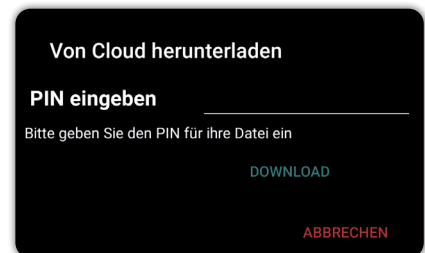
- In the *Keylezz® Lock Configurator* app, select the menu „Hintergrundsystem“ (Background system)



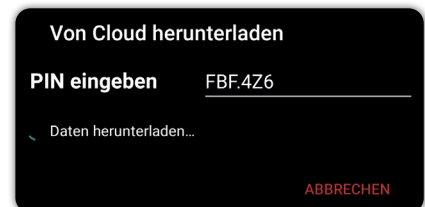
- Click on the button „Import from Cloud“ (orange circle)



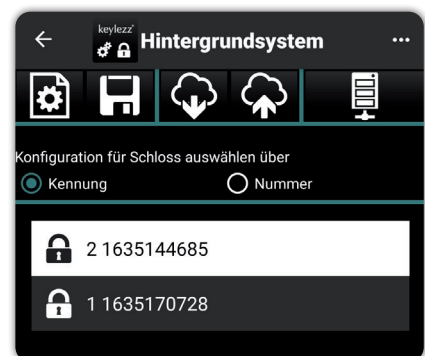
- You will now be prompted to enter the PIN that was generated in *Keylezz® Lock Manager*



- After entering the PIN, the data is downloaded



- After a successful download, the locks are listed below each other



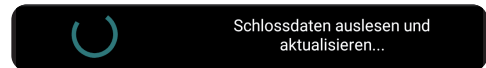
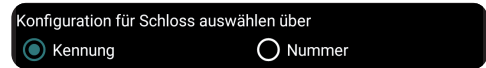
3.1.8. Transfer configuration to lock

You have three possibilities to select or have selected the configuration for a lock.

A) Configuration via Lock ID

If you have already entered the lock IDs of the locks into the background system or if you are successfully connected to a *Keylezz® Lock Manager*, select „Kennung“ (ID).

Now simply hold the smartphone against a previously registered lock and the configuration will be transferred directly to the lock. During this time, neither the smartphone nor the lock should be moved.

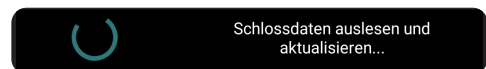
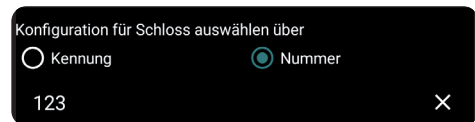


B) Configuration via lock number

If you have not configured any lock identifiers but have configured the locks with unique numbers, select „Nummer“ (Number).

Search for the number you want to configure and mark the relevant entry by touch.

Now hold the smartphone to the lock in question to transfer the configuration. During this time, neither the smartphone nor the lock should be moved.



The software automatically selects the next lock for you, so you can configure the locks directly in the numbering sequence.

C) Direct connection to Keylezz® Lock Manager

With direct connection, the configuration is loaded directly from the background system and not via a database on the smartphone.