

Electronic furniture locks – Keylezz® Latch Lock Plus
Item number: 5804028



Electronic furniture locks **Keylezz® Latch Lock Basic Plus**

- Locking systems for metal and wooden cabinets
- 2 x 123A 3V batteries for double runtime
- For doors & drawers with and without handle
- Good readability of the access medium

**Upgrade your furniture now with
the Keylezz® Latch Lock!f!**

Highlights

- Your existing employee ID card or smartphone is the key
- One medium for all accesses
- Issue and revoke authorizations in seconds
- Expand your locking system as required
- Automatic locking of the locks
- Full control by using employee ID card
- Multiple use of furniture e.g. lockers in shift operation
- Furniture lock management via card or smartphone



Use and management via smartphone
(Requirement: Mifare Classic)

The components

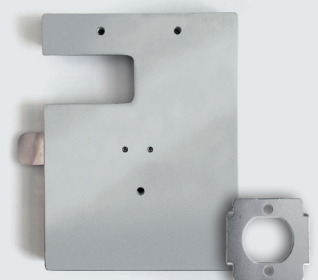


Keylezz® Latch Lock
with accessories

Optional accessories



Keylezz® external antenna with
LED light and power supply connector

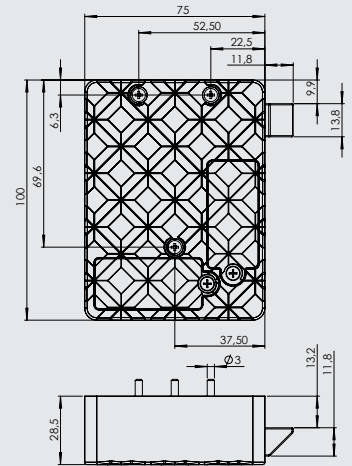


Metal door accessories
for metal cabinets



Technical data

Weight	Weight per assortment	Total set: 200 g
Electrical data	Device class RL 1999/5/ EG	Class 2
	Equipment class according to RL 1999/5/ EC	max. 66 dBµA/m in 10m
	Technologies	13,56 MHz, MIFARE Classic and DESFire; LEGIC Advant (ISO14443A)
	Batterie type	2x CR 123A 3V
Environmental conditions	Operating temperature	-5°C to +50°C
	Relative humidity operation	20% to 75% (non condensing)
Dimensions in mm (LxWxD)	100x86,5x28,5 (With open trap)	100x75x28,5 (With closed trap)



The content

Keylezz® Latch Lock Basic Plus

Range of application: wooden drawers, wooden sliding doors, wooden cabinets, Plastic doors



Includes

- Keylezz® Latch Lock Basic Plus
- internal antenna Pos.A
- locking part with predetermined breaking point
- automatic ejector
- batteries 123A 3V
- screws

Technology variants

- Mifare Classic
- Mifare DESFire
- Legic Advant
- all common ISO 14443A Technologies

NEW

Keylezz® Cam Lock „Turn“

with LED display for occupancy and battery level, battery change from the outside without having to open the cabinet.

