

keylezz<sup>®</sup>



**Keylezz<sup>®</sup> Latch Lock**  
*Multiflex*



Operating and assembly instructions

## Package contents



**Keylezz® Latch Lock**  
with full metal latch



**Ejector**  
with predetermined breaking point  
and spring ejection for automatic  
door opening



**Batterie**  
2x CR 123A 3V

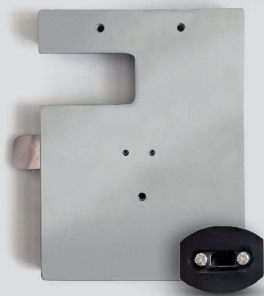


**Screws**  
for mounting

## Optional included in delivery



**Keylezz® External antenna**  
with LED display



**Metal door set**  
Metal plate, mounting spigot  
for External antenna

## Technical data

Weight	Weight per assortment	Total set: 200 g
<b>Electrical data</b>	Device class RL 1999/5/EG	Class 2
	RF Radiation	max. 66 dBµA/m in 10 m
	Technologies	MIFARE Classic and DESFire; LEGIC Prime, Advant and CTC; ISO 15693, ISO14443A
<b>Environmental conditions</b>	Battery type	2x CR 123A 3V
	Operating temperature	-5° C to +50° C
	Relative humidity operation	20% to 75% (non condensing)
<b>Dimensions in mm (LxWxD)</b>	100x86,5x28,5 (With open trap)	100x75x28,5 (With closed trap)



## Battery life - beep function

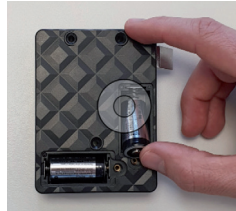
The lock signals in a period of 60 days with a melody when operated that the battery is getting low (an alarm). With the last power comes an End of Life melody and the deadbolt opens. This ensures that the batteries can be changed, for example. The lock settings are not deleted, but the time is reset after 24 hours. The authorisations remain as they were!

## Commissioning

### Insert / change batteries

Open the battery compartments with a small torx screwdriver. Place the batteries in the battery compartments with the correct polarity (+/-). Then close the battery compartment covers again.

**Attention!** As soon as the batteries are inserted, the lock is active. Therefore, observe the necessary distance for storage (page 11 – mounting distance).



## The choice of usage mode

### Fixed assignment or Freelocker

The **Keylezz® Latch Lock Multiflex** has two modes, **Freelocker** and **Fixed Assignment**, which you can switch between. To do this, you need the **Keylezz® Lock Configurator** smartphone app or the **Keylezz® Lock Manager** management software.

#### 1. fixed assignment (Fixcode)

In this mode, users are permanently assigned to the lock. Compared to the Freelocker mode, several users can be authorised to a lock.

#### 2. Freelocker (free choice of locker)

In this mode, each user can select an unoccupied locker. The locker is locked with the user card and becomes available again for new users after use.

## Programming and management options

You have the following two options for programming and managing the **Keylezz® furniture locks**:

### 1. Keylezz® Lock Configurator

Program and manage the **Keylezz® furniture locks** conveniently via your smartphone with the app **Keylezz® Lock Configurator app**. The instructions for the app can be found in the download area at [www.keylezz.de/downloads](http://www.keylezz.de/downloads)



### 2. Keylezz® Lock Manager

**Keylezz® Lock Manager** is the management software for **Keylezz® furniture locks**. Management via the **Keylezz® Lock Manager** offers you many advantages. Log in using your access data and follow the wizard during setup.

Clearly structured and divided into the areas: locks, people, profiles and events. This gives you a quick overview and immediate access to the individual options and settings..



## Lock to factory settings

You have three options for resetting the lock to the factory settings:

- via smartphone app **Keylezz® Lock Configurator**
- via Software **Keylezz® Lock Manager** software
- directly on the lock

### Reset at the lock

- On the back of the lock there is a small hole behind which there is a RESET button (picture left, orange circle)
- Now insert a paper clip bent apart or a small pin into the hole and press for a few seconds until you hear a long beep.
- The lock is now reset to the factory settings.



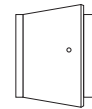


Door: **DIN left**  
 Door hinge left, latch of the lock is **down left**

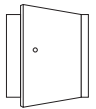
## Mounting instructions

### Position of the trap

**DIN left**  
 Door hinge right, latch of the lock is **down left**



**DIN right**  
 Door hinge right, latch of the lock is **top right**



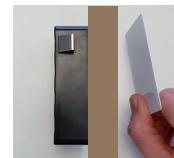
### Mounting distance for RFID signal (alternative: external antenna)

The mounting distance between two locks must be observed. Otherwise there is a risk that the RFID reading fields overlap, interfering with each other and discharging the battery.



Door: **DIN right**  
 Door hinge right, latch of the lock is on the **top right**

### RFID read distance **Always check the reading distance after mounting!**



**Cards:**  
 Up to 25 mm

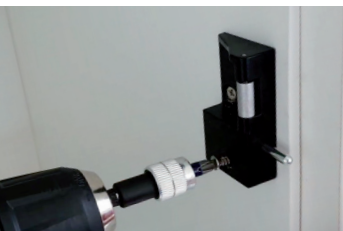
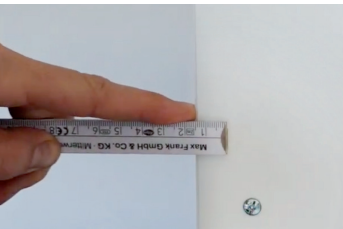


**Keyfobs / Transponder:**  
 Up to 20 mm

Assembly step by step ▶

# Mounting – Keylezz® Latch Lock

**Important:** When using the Keylezz® External antenna, consider page 15 before installation.



## 1. Horizontal position of the lock on the door

Inner edge of side wall to housing of lock = 13 mm (see 1.)

### Position of the screws:

- Inner edge of the wall to the 1st opening for the mounting screw = 35.5 mm
- Inner edge of the wall to the central opening for the mounting screw = 50.5 mm
- Inner edge of the wall to the 3rd opening for the mounting screw = 65.5 mm

## 2. Align the lock with the spirit level, fix it with the three screws

## 3. Vertical position of the ejector

The roller of the ejector (see 2. = 20 mm) must be placed in the center of the lock latch (see 3. = 13,8 mm) his results in a distance of 22 mm (see 4.)

**DIN right door:** Distance from top edge of ejector to top edge of lock = 22 mm

**DIN left door:** Distance from lower edge of ejector to lower edge of lock = 22 mm.

Explanation of DIN doors on page 11.

## 4. Horizontal position of the ejector

Distance from the inner edge of the door to the screw-on hole of the ejector = 22 mm (see 5.)

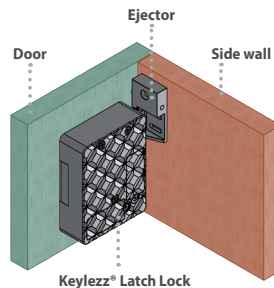
## 5. Fix the ejector with three screws



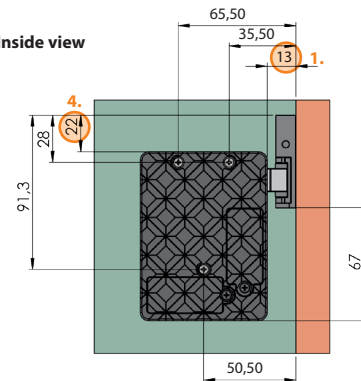
On our Youtube channel you can find an **installation video** which shows the assembly.

# Overview and dimensions of the components

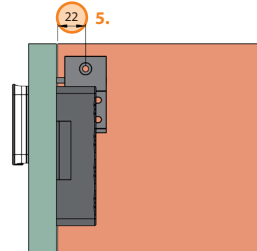
## 3D view



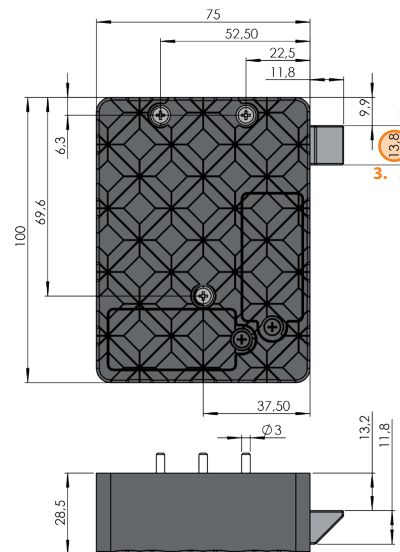
## Inside view



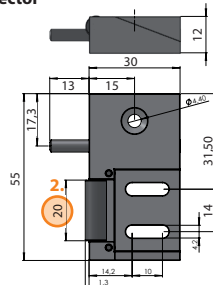
## View side



## Keylezz® Latch Lock



## Ejector



## Optional accessories

### Keylezz® External antenna

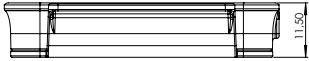
The Keylezz External antenna is used when:

- the furniture has a metal door
- the door is too thick for the RFID signal
- a visual status indication via LED signal is required (e.g. with Freelocker: red for occupied furniture)
- an optical battery warning signal or
- an external emergency power supply for the lock is desired

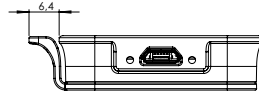
The antenna has an optional additional handle (shown on the right in the picture), which can be mounted on both the left and right side.



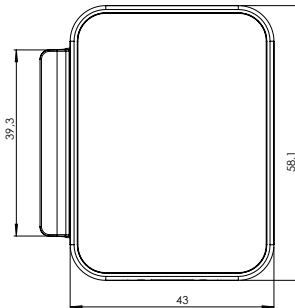
View side



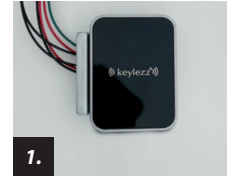
View bottom



View front



## Mounting Instructions – Keylezz® External antenna



1. Remove the front with the supplied tool at the bottom. Loosen the circuit board and remove it as well.



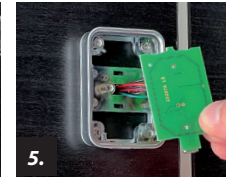
2. Position bracket and mark center opening. Take into account the positioning of the latch lock on the rear side (page 12). A distance of 3 cm from the door edge is ideal.



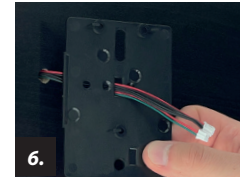
3. Drill the hole for the cable guide in the front using a wood drill (10 mm).



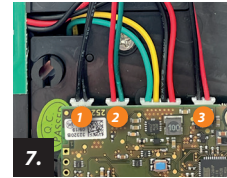
4. Fix the lock with the two screws supplied.



5. Push the cables through the opening and reattach the board. Then insert the front.



6. Release the cover of the Keylezz® Latch Lock by pushing it sideways and feed the cables of the external antenna through the central opening of the cover.



7. Wiring: Connect the cables of the external antenna to the circuit board of the latch lock. Pos.1 black/black, Pos. 2 red/green, Pos. 3 black/red.



8. For the position of the lock, refer to the separate installation instructions (page 12). If necessary, the cable opening must be widened so that the cables do not pinch off.



9. Done. The Keylezz® Latch Lock can now be put into operation.

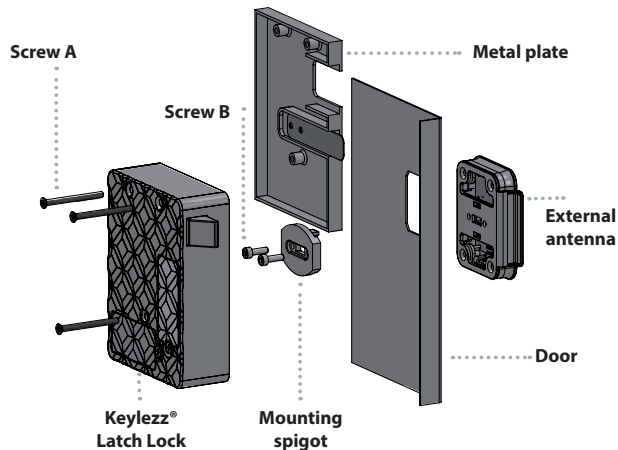
## Optional accessories

### Keylezz® Metal door set

For metal and sheet metal doors, Keylezz® offers the Metal Door Set, which allows easy and quick installation of the Keylezz® external antenna and latch lock **without** drilling by means of a metal plate.

#### The set consists of:

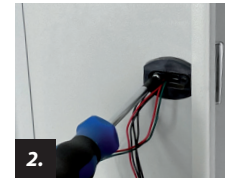
- Keylezz® External antenna
- Metal plate
- Mounting spigot



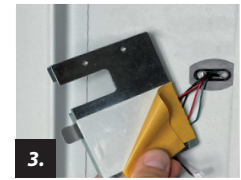
## Assembly instruction – Keylezz® Metal door set



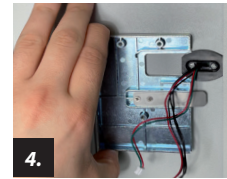
1. If available, remove existing lock from metal door, otherwise drill hole (19 mm). Feed the cable of the Keylezz® external antenna through the opening.



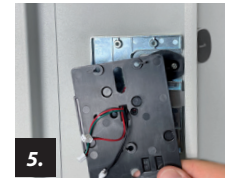
2. Feed the cables through the mounting socket and screw it on lightly from the inside with the screws provided, but do not fix it yet.



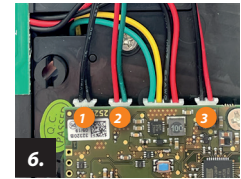
3. We recommend the use of double-sided adhesive tape (not included).



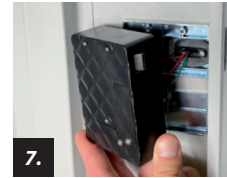
4. Push the metal plate sideways behind the mounting spigot without allowing the adhesive to grip. Push as far as it will go, then press firmly. The fastening connecting piece tight.



5. Release the cover of the Keylezz® Latch Lock by pushing it sideways and feed the cables of the external antenna through the central opening of the cover.



6. Wiring: Connect the cables of the external antenna to the circuit board of the latch lock. Pos.1 black/black, Pos. 2 red/green, Pos. 3 black/red.



7. Replace the cover on the Keylezz® Latch Lock and place the lock on the metal plate.



8. Fix the lock with the three threaded screws supplied.



9. Done. The Keylezz® Latch Lock can now be put into operation.



## Safety instructions & important information

**Important:** If the door is closed during commissioning or battery replacement without the battery being inserted, the door cannot be opened via the radio technology: Breaking open the door is necessary. Follow the detailed instructions for installing and commissioning the radio system. When changing the battery, pay attention to the polarity (+/-). The polarity (+/-) is marked on the bottom of the battery compartment and on the battery. Never store locks with inserted battery directly next to each other and also not together with data carriers, otherwise the battery will be discharged.

**Important:** When installing the lock and locking part, make sure that the door is not braced and that this bracing is transferred to the locking system. There is a risk that the latch can no longer open → Malfunction. Avoid doors that are preloaded by a sealing rubber.

### Intended use

Authorized opening of an electronic lock in wooden furniture by means of a coded chip. This chip can be in the form of an ID card (check card format) or key fob. The function of the lock is guaranteed only if it is placed on non-conductive materials (wood, plastic) with a maximum material thickness of 20 mm. The reading distance also depends on the transponder design. In case of a higher material thickness, metal doors or doors with metal overlay, an external antenna should be attached.

### Predictable abuse

If the lock is used in an explosive environment, outside the stated specifications or for damage resulting from improper use, the operator bears sole responsibility and the manufacturer accepts no liability.

### Conversions or modifications

Any modifications to the latch lock are not permitted. The electromagnetic behavior of the latch can be impaired by additions or modifications of any kind. Therefore, do not make any changes or additions to electrical/electronic components, otherwise the warranty and guarantee claim will become void.

### Spare and wear parts and auxiliary materials

The use of spare parts from third-party manufacturers can lead to hazards. Only use original parts or parts approved by the manufacturer. The manufacturer accepts no liability for damage resulting from the use of spare parts not approved by the manufacturer.

## EEC Declaration of Conformity

### in accordance with the directives

2004/108/EC	Directive on electro-magnetic compatibility (EMC)
1999/5/EC 1999	Directive on radio equipment and telecommunications, terminal equipment and the mutual recognition of their conformity (R&TTE)
2002/96/EC 2003	Directive on waste electric and electronic equipment (WEEE)
2011/65/EC	Directive on the restriction of the use of certain hazardous substances in electrical and electronic equipment (recast)

**for the product:** Keylezz® Fallenschloss

### The following harmonised standards are applied:

EN 300330.2 V1.3.1 : 2006 EN 301489-3 V1.4.1 : 2002  
EN ISO 12100: 2010 EN 50364 : 2010



## Warranty conditions

This product has been carefully designed, manufactured and carries a warranty against defects in materials or workmanship at the time of purchase. The warranty is valid for 12 months from the date of purchase and may be claimed upon presentation of proof of purchase, if applicable. The warranty obligation is limited to rectification of defects by repair or replacement of the products free of charge. Costs and risks of transportation, assembly and disassembly expenses, as well as any other costs associated with the repair cannot be reimbursed. Liability for consequential damage to the device, of whatever nature, is excluded in principle.

## Disposal

**Danger!** The electronics of the latch lock contain a lithium-ion battery. Dispose of this battery in accordance with national regulations and not in household waste. When disposing of partially discharged batteries, make sure that no

When disposing of partially discharged batteries, make sure that no unintentional short circuits (e.g. caused by key rings in clothing pockets) can occur between the poles of the battery. Risk of explosion and fire. When transporting the locks, pack the battery in such a way that no short circuit can occur (e.g. tape the poles with non-conductive adhesive tape).

**Important!** Separate the electronics of the latch lock from the remaining parts and dispose of them according to local regulations and guidelines.

